

NEW TexturePro CT Software

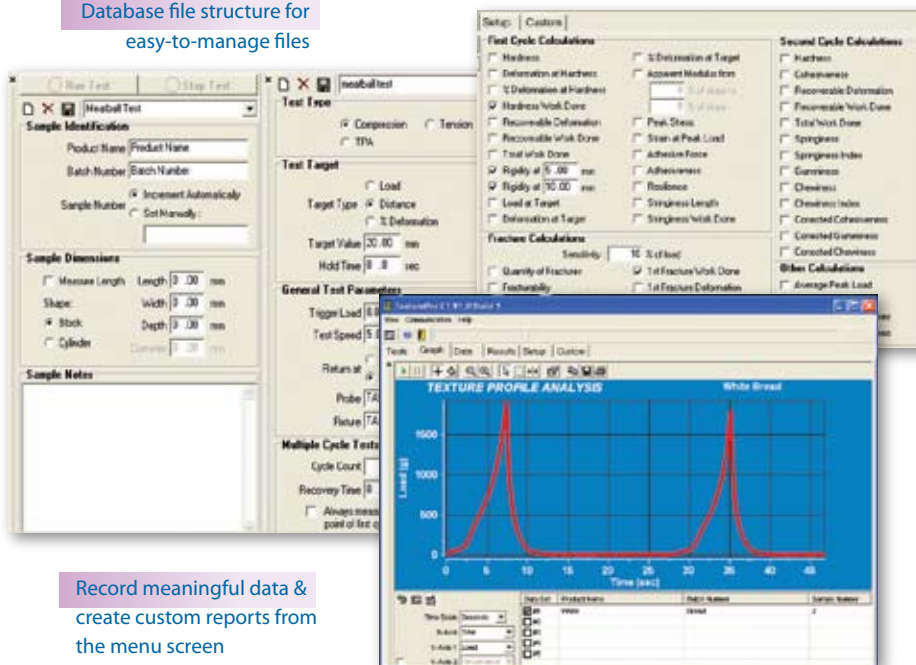
Powerful software for CT3 control, data acquisition and database storage

Take control of your CT3 with this powerful, easy-to-use software! Collect data and **perform detailed data analysis** with real time graphic plotting during the test. Easily create custom reports and graphs right from the menu screen.

- Sample identification set-up screen helps new operators quickly get started; test fields outline a variety of parameters
- Intuitive set up for test methods and database file structures in a single window
- Data is captured as a graph and stored in tabular database format
- Advanced data analysis with built-in parameter calculations such as springiness, chewiness, hardness and much more!
- Evaluate mean and standard deviation of each result parameter for up to 30 samples

Easily select test parameters

Database file structure for easy-to-manage files



Record meaningful data & create custom reports from the menu screen

Specifications

	LOAD RANGE	RESOLUTION ¹	ACCURACY ²
CT3-100	0.2g-100g	0.01g	0.1g
CT3-1000	2g-1000g	.01g	1.0g
CT3-1500	3g-1500g	0.2g	1.5g
CT3-4500	9g-4500g	0.5g	4.5g
CT3-10000	10g-10kg	1.0g	10g
CT3-25kg	50g-25kg	2.0g	25g
CT3-50kg	100g-50kg	5.0g	50g

	TRIGGER POINT RANGE	RESOLUTION
CT3-100	0.1 - 10g	0.01g
CT3-1000	0.2 - 100g	0.10g
CT3-1500	0.2 - 150g	0.10g
CT3-4500	0.5 - 500g	0.10g
CT3-10000	1 - 1000g	1.0g
CT3-25kg	2 - 2500g	2g
CT3-50kg	5 - 5000g	5g

SPEED	0.01 - 0.1 mm/s in increments of 0.01 mm/s 0.1 - 10 mm/s in increments of 0.1 mm/s Accuracy ±0.1% of setpoint
-------	---

POSITION	Range: 0 - 100 mm Resolution: 0.01 mm ³ Accuracy: better than 0.1mm
----------	--

TEMPERATURE MEASURING RANGE	20°C to 120°C
-----------------------------	---------------

OUTPUT	USB Port, RS232 Compatible Serial Port
--------	--

¹ Refers to ability of electronics to resolve load cell signal.
² Load accuracy in a stable, room temperature environment.
³ Available when used with TexturePro CT software.

Computer Requirements

800MHz Pentium processor
512MB of RAM
30 MB of available hard drive space
800x600 monitor resolution
Windows2000, XP or Vista operating system
One USB or RS-232 port



Brookfield Engineering Laboratories, Inc.
11 Commerce Boulevard
Middleboro, MA 02346-1031 USA
T: 800.628.8139 or 508.946.6200 F: 508.946.6262
W: www.brookfieldengineering.com

NEW CT3 Texture Analyzer

Our newest, low-cost texture analyzer offers both compression and tension!

NEW Tension Mode provides tensile testing capability

An extensive history and customer input have contributed to the development of the most powerful, low cost, stand-alone Texture Analyzer ever produced.

With six test modes (plus calibration check) and a wide choice of accessories, **no other texture analyzer has ever done so much without a computer and software!**

Increased Load Cell Options

- 100g
- 1000g
- 1500g
- 4500g
- 10kg
- 25kg
- 50kg

Available Test Modes

Normal Test:
a single compression cycle

Hold Time Test:
compress and hold

Cycle Count Test:
compress multiple times

Bloom Test:
gelatin bloom strength test

TPA Test:
texture profile analysis

Tension Test:
tensile testing

Static Load Test:
calibration check



NEW Choice of Base Tables allows for larger samples and more accessory choices



Fixture Base Table



Rotary Base Table

*Push or Pull
with Tension or
Compression Modes!*

NEW Increased Probe Travel Distance with more space for larger samples

BROOKFIELD TEXTURE ANALYZERS

T: 800.628.8139 or 508.946.6200 F: 508.946.6262 www.brookfieldengineering.com

The CT3 Texture Analyzer offers more than others at an affordable price!

What makes the CT3 stand out from all others? The CT3 is a rugged yet compact bench top instrument that can be carried out to the production floor and still operate with Brookfield precision. With versatile test capability that is easily mastered in a few minutes by an operator, the CT3 becomes a powerful tool for both R&D and QC.

The principle of operation of the CT3 Texture Analyzer is to subject a sample to compression forces using a probe, or tension forces using grips. With controlled compression or tension forces, you are able to imitate almost all conditions imposed on a wide range of food products, personal care products and industrial materials. The resistance of the material to these forces is measured by a calibrated load cell which is reported in either grams or Newtons. The forces measured will be a function of the properties of the sample and all the parameters of the test method. Such measures provide a "real life" insight into the physical properties of a product, information that can be valuable in maintaining consistent product quality while minimizing waste in production.

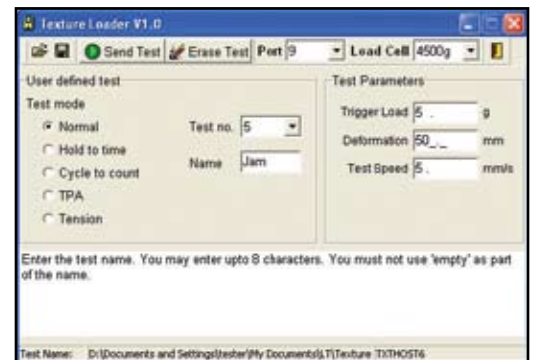
Using Texture Loader Software and a personal computer, you can create and store inside the CT3 up to 10 customized test methods unique for your own samples. TexturePro CT Software is also available for full computer control, unlocking even greater power for data gathering analysis.

What's Included?

Instrument with choice of load cell
Texture Loader Software
USB Cable

NEW Texture Loader

Our innovative Texture Loader software is **supplied with every CT3** allowing creation of up to 10 additional test methods customized for your sample testing! These tests are created on a PC and downloaded into memory in the CT3. Ideal for QC environments when different tests are routinely required for a variety of products.



IT'S YOUR CHOICE!

← This configuration shows a CT-3 with Fixture Base Table and Dual Extrusion Cell.

↓ This configuration shows a complete water bath system available for melting and conditioning gelatin for testing according to GMIA and GME standards.

Optional Accessories

The CT3 has a wide variety of probes, fixtures and jigs which enable it to be very versatile. Brookfield can also custom design a fixture and probe for most applications.

Choice of Base Table
TexturePro CT Software
Gelatin Bath System for sample conditioning
Bloom Jar - industry approved
Temperature Probe

BROOKFIELD TEXTURE ANALYZERS

T: 800.628.8139 or 508.946.6200 F: 508.946.6262 www.brookfieldengineering.com

Fixtures, Probes & Jigs

Deciding which fixture, probe or jig is needed for your application can be a daunting process for the novice. We've shown just a partial list of standard accessories — there are many more to choose from! Need help? Visit our website or call to discuss your application.

Don't see what you need? Brookfield can design fixtures, probes and jigs to hold products of all shapes and sizes and to perform a variety of texture tests. Please call to discuss your application.

Food Applications

Biscuits	Gels/Gelatin
Bread	Margarines
Butter	Meat Products
Cakes	Pet Foods
Candies	Pudding
Cheese	Sauces
Chocolate	Snack Foods
Confectionery	Spreads
Cookies	Starch
Crackers	Surimi
Fruits	

Non-Food Applications

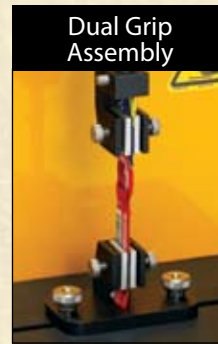
Adhesives	Paint
Asphalt	Personal Care
Candles	Polymers
Cosmetics	Rubber
Creams	Sealants
Detergent	Silicone
Foams	Soap
Grease	Sponges
Gum	Wax
Packaging	

Why Brookfield?

75 years testing experience
 Laboratory test and recommend service
 Start up assistance available
 Educational classes available



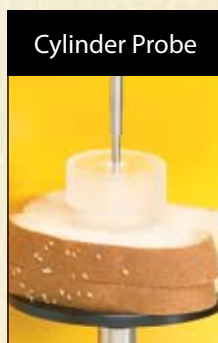
Knife edge probe can be used to test break strength. *Ideal for cookies, crackers and more.*



Grip samples to imitate "tearing" or pulling motion. *Ideal for products and packaging.*



Compress and extrude samples with a travelling plunger. *Ideal for dry cereal, small fruits and vegetables and more.*



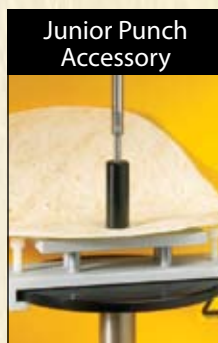
A cylinder probe can provide uniform compression over fixed surface area. *Ideal for most bakery items and more.*



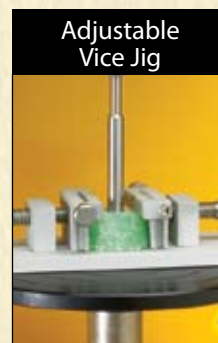
An industry approved probe and sample jar provides consistent *gelatin bloom tests.*



Extrusion cell fixture allows backward or forward extrusion. *Ideal for pie filling, toppings and more.*



Puncture compression test for solid materials such as *tortilla wraps and films.*



A small scale assembly with precise sample positioning is perfect for testing small items such as *gum drops, jelly beans and candy.*



A small scale shear blade is the ideal choice for testing tenderness. *Ideal for sausage, hot dogs, chicken and other meat products.*

A complete list of fixtures, probes and jigs can be found on the Brookfield website: www.brookfieldengineering.com.